

**Elements of Art**  
(color, line, shape, value  
and texture)  
&  
**Principles of Design**  
(balance, repetition,  
space, and variety).

Students will have one  
**Art Final**  
at the end of  
each semester.

**Dates: TBA**

**PROJECT DUE : TBA**

## **Our Mission :**

To provide Christian  
families a Christ  
centered education  
that disciples our  
students to honor  
Jesus Christ in thought  
word and deed.

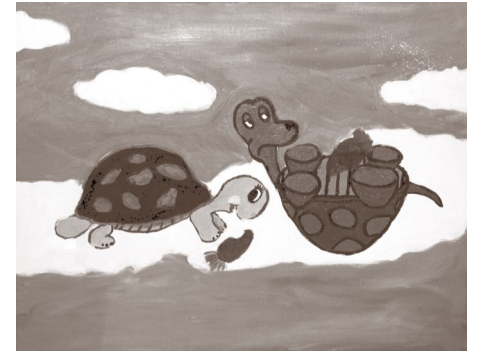
**WESTLAKE CHRISTIAN  
ACADEMY**

275 S. Lake Street  
Grayslake, IL 60030  
847-548-6209  
[Wwww.westlakechristian.org](http://www.westlakechristian.org)

---

# **Drawing**

---



*Oil*  
*Featured artist:*  
*Abby Flemming– Michelle Stoner*

**Students will learn composition through the use of:**

**COLOR**  
use of color spectrum/ harmony and intensity

**LINE**  
textures and patterns

**SHAPES-**  
geometric (linear) and organic (round)

**TEXTURE**  
created surfaces such as (brick, wood, smooth stone, shine, water)

**VALUE**  
range from light to dark

**BALANCE**  
In color/ space/ symmetry

**REPETITION**  
same object / shapes /size

**SPACE**  
Dimension/ positive / negative

**VARIETY**  
abstract/ illusion / unity

**ART SUPPLIES NOT PROVIDED BY SCHOOL:**

**SUPPLIES DUE AT THE END OF THE WEEK**

- 8 ROLLS OF PAPER TOWELS
- 3 BOXES OF KLEENEX
- DRAWING PAD
- CHARCOAL— WILLOW STICKS
- 1 ROLL OF 3/4” ARTIST OR DRAFTING TAPE  
(*NOT MASKING TAPE*)
- KNEADED ERASER
- TRI-TIP ERASER
- 1 ULTRA FINE POINT BLACK SHARPIE

**classroom will supply the rest of the materials.**

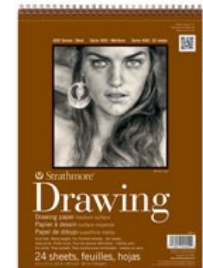
**Elements of Art**

(color, line, shape, value and texture)

&

**Principles of Design**

(balance, repetition, space, and variety).



**Kneaded Eraser or Sticky Tack it works as an eraser.**

Tri- Tip Eraser a non-abrasive, latex-free material